



2PO FOR BCL REFEREES

REMINDER

CREATED BY BCL REFEREE DEPARTMENT #2021

INTRODUCTION

Dear referees,

A few weeks ago we had a game in which we suddenly had to referee with 2 referees. This required some serious adjustment for both colleagues.

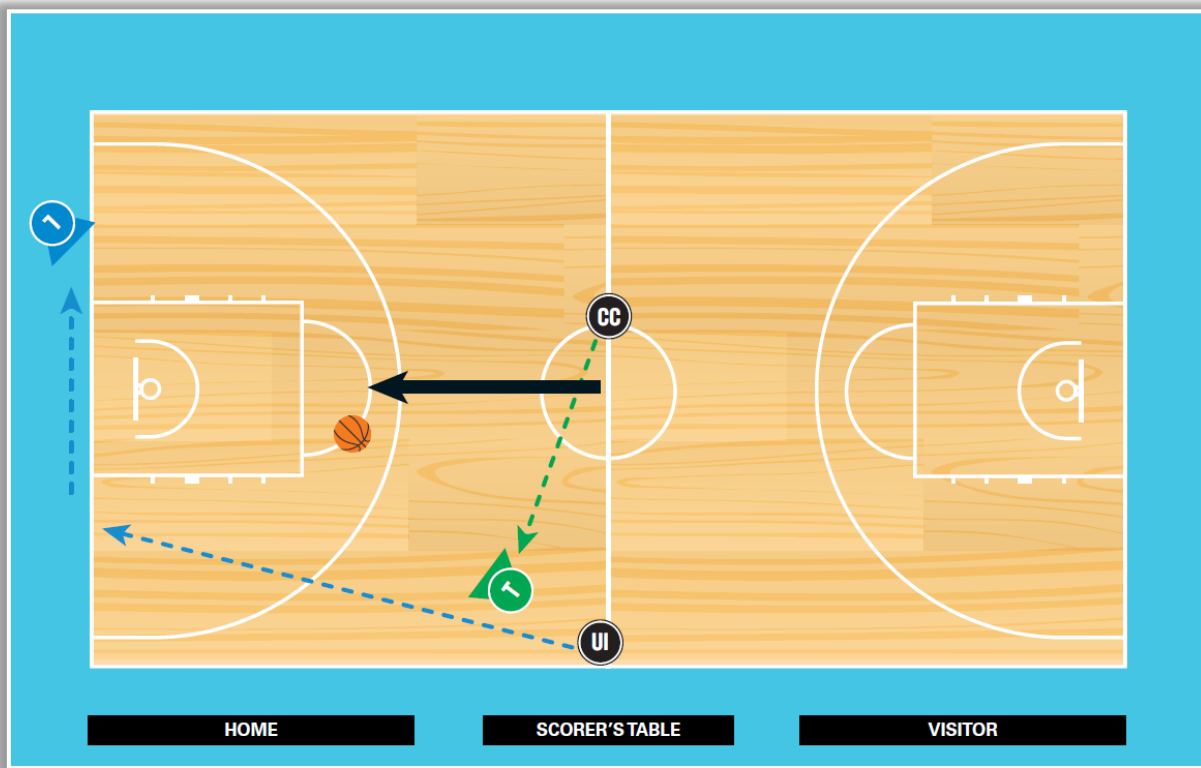
In case such a situation should arise again, we would like to give you a brief summary of the basic principles of 2 Person Officiating which you can use in your pregame.

Good luck!

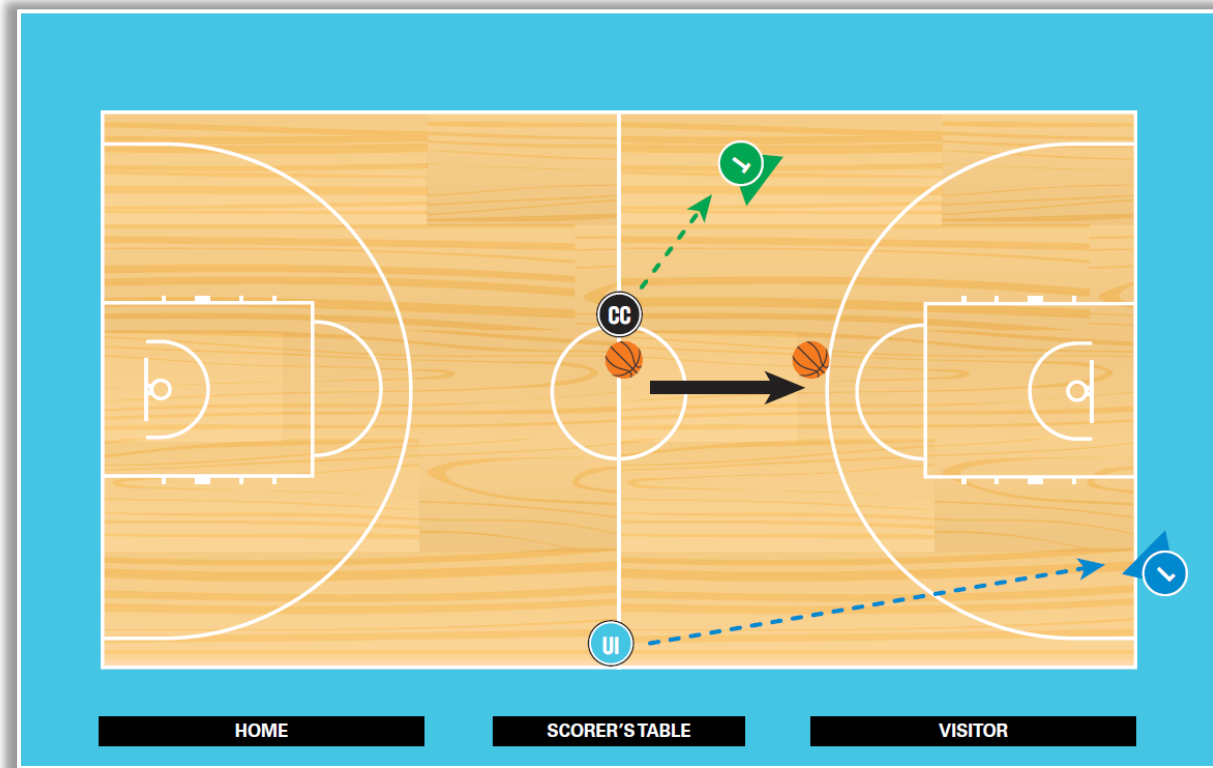
Davorin Nakic
BCL Referee Manager



JUMPBALL

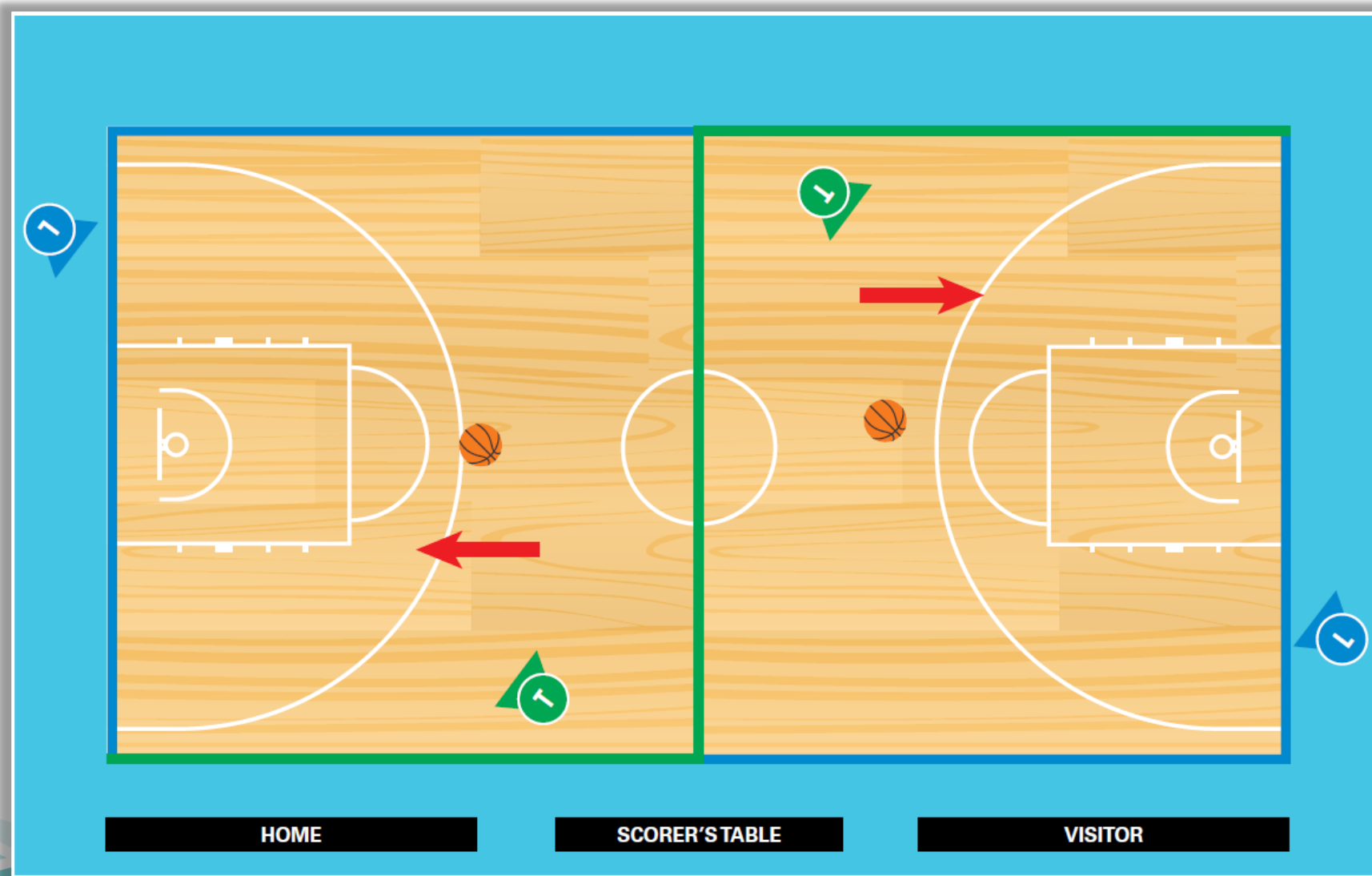


The ball goes left after jump ball

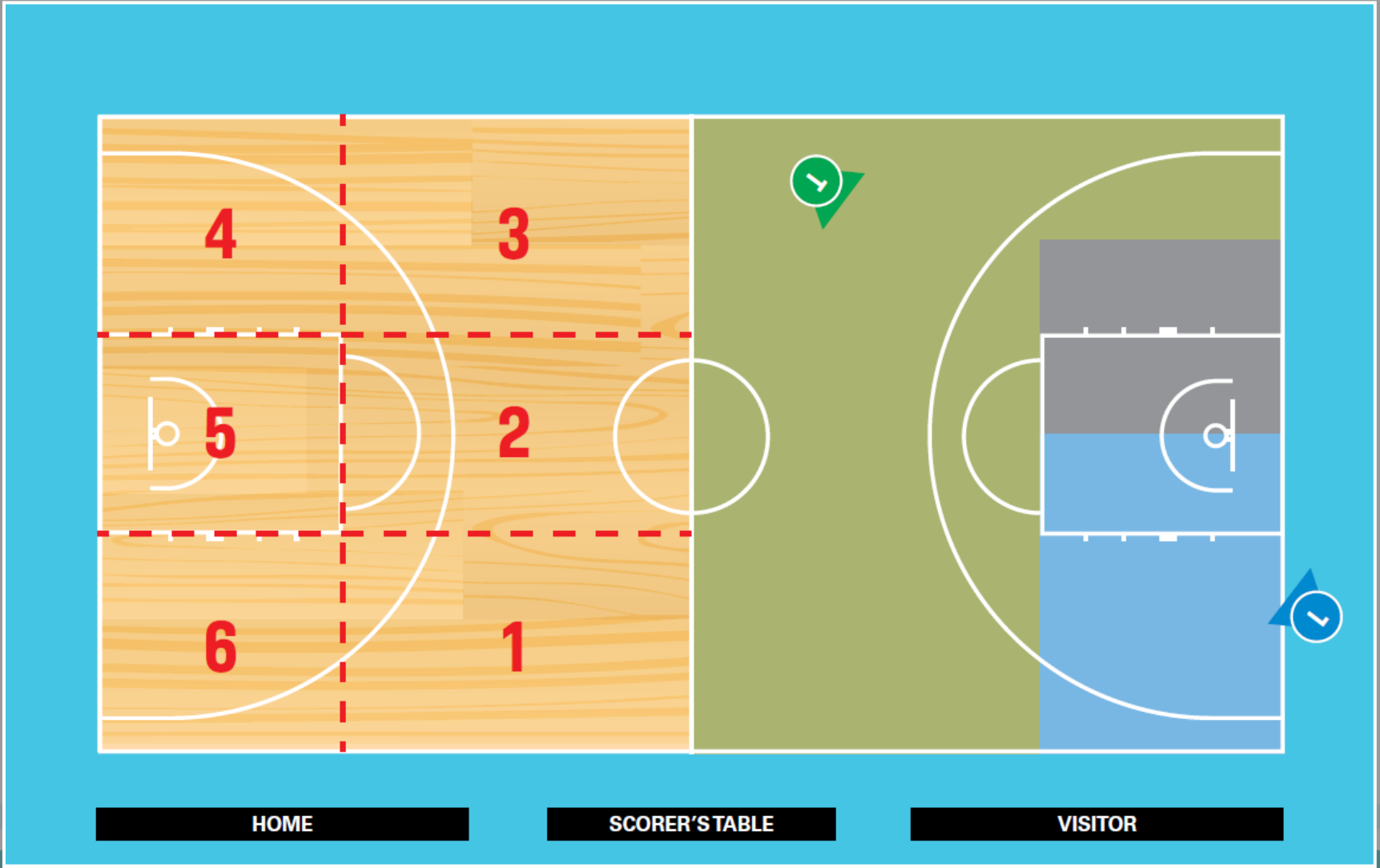


The ball goes right after jump ball

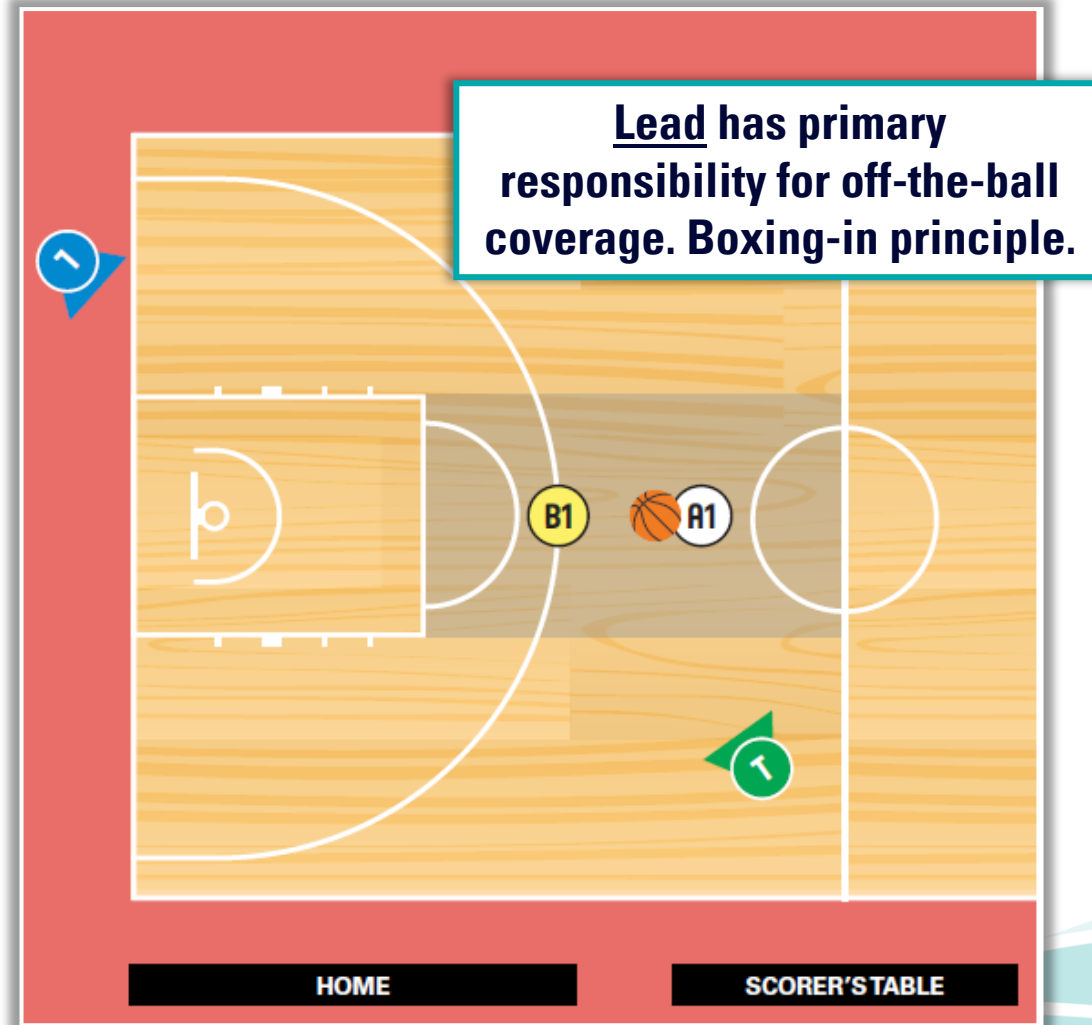
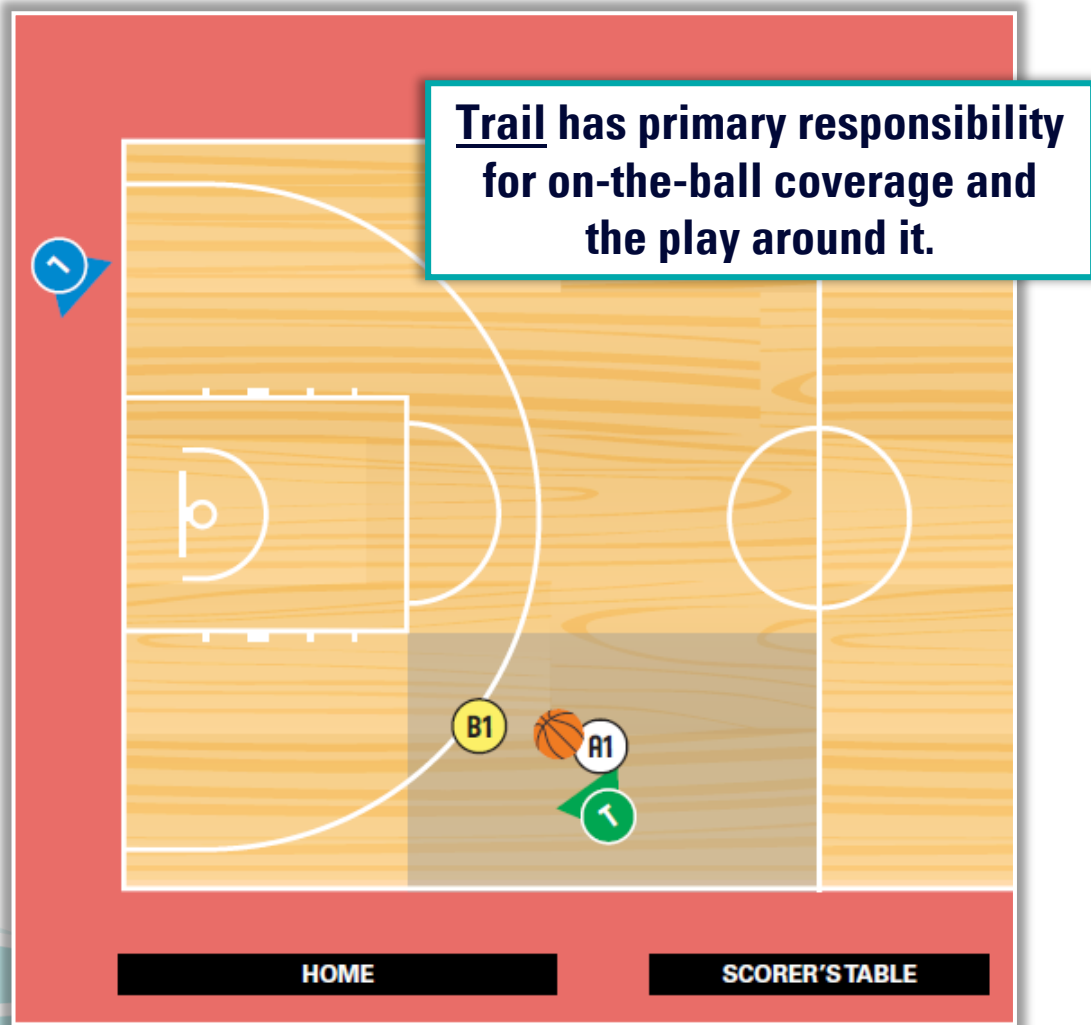
2PO - LINES' COVERAGE BY THE REFEREES



2PO COURT COVERAGE - DIVISION OF RESPONSIBILITIES

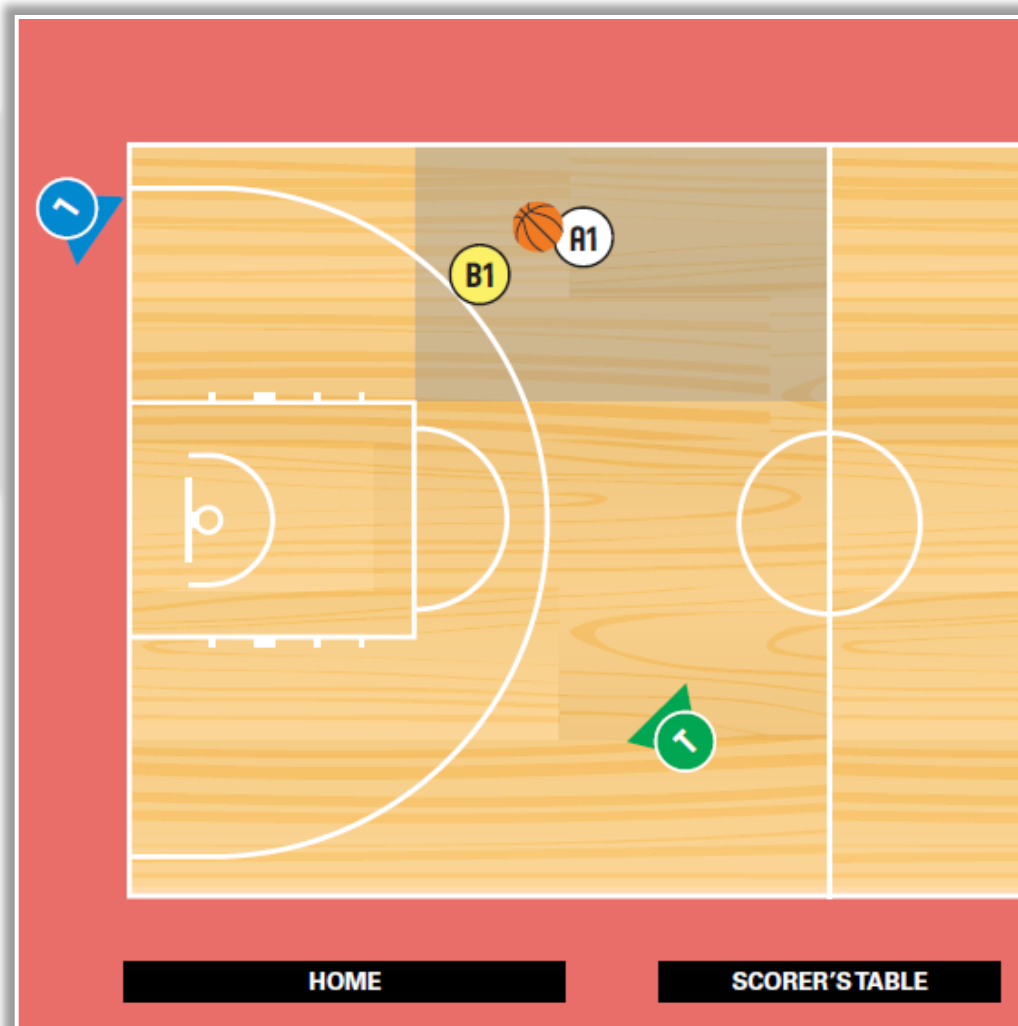


2PO COURT COVERAGE - RECTANGLE 1 & 2



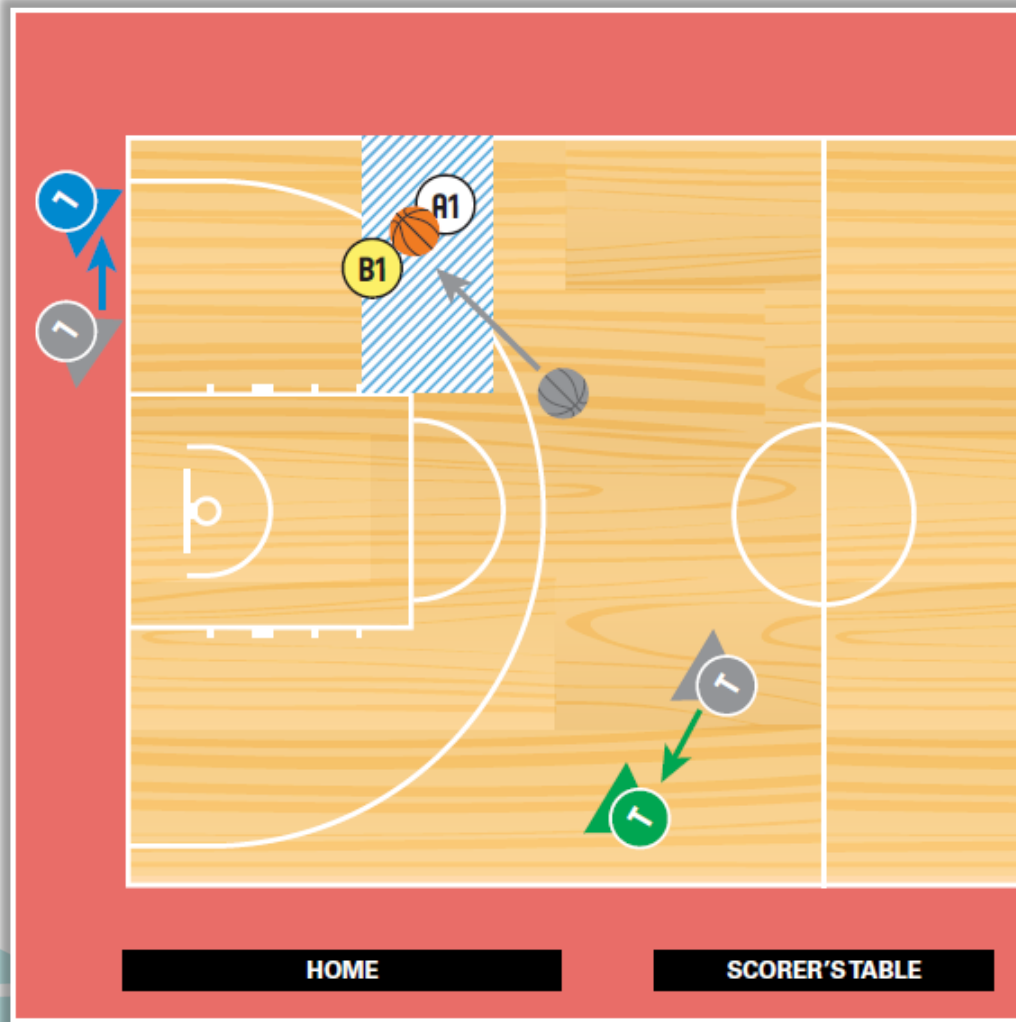
2PO COURT COVERAGE - RECTANGLE 3

Lead has primary responsibility for off-the-ball coverage & is on the EPL.
Lead should be ready to receive the play coming in Rectangle 4.



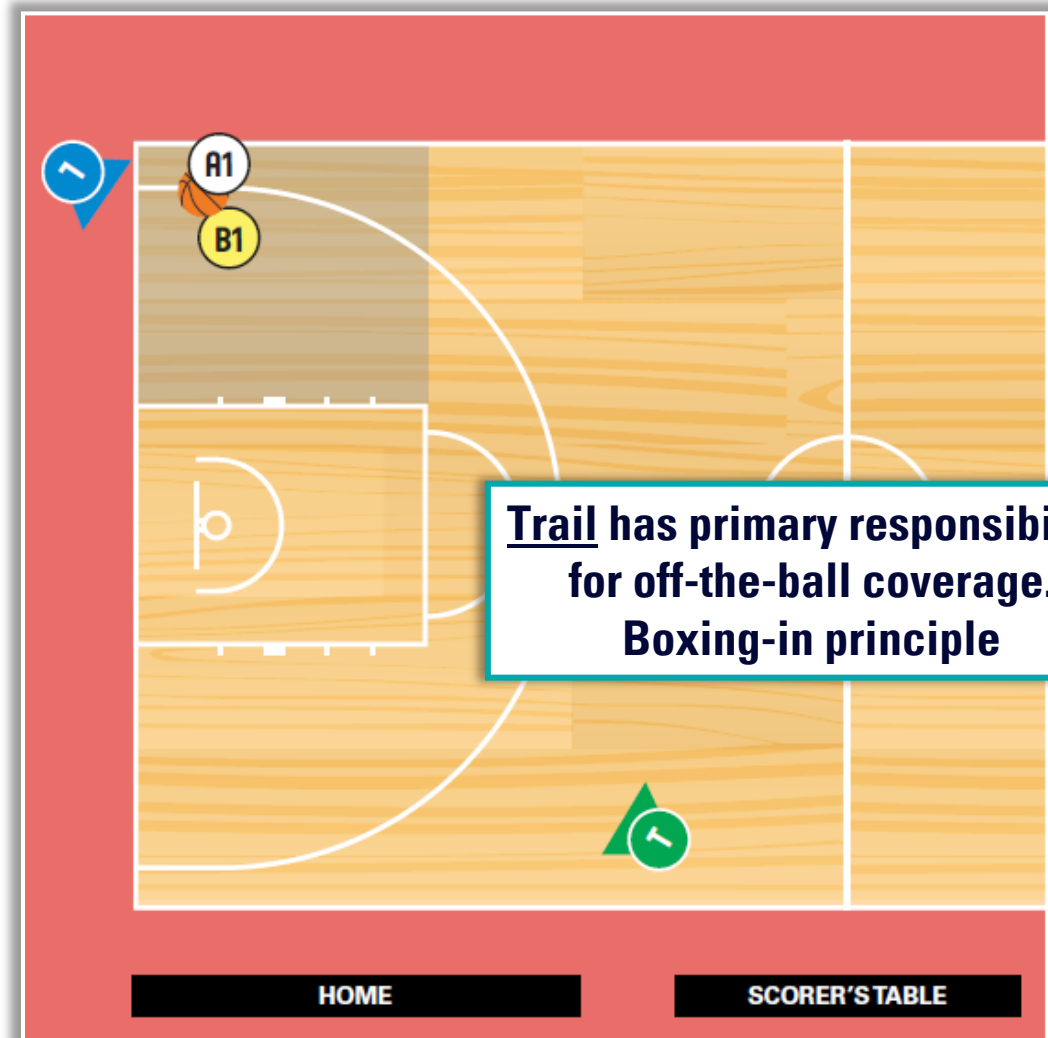
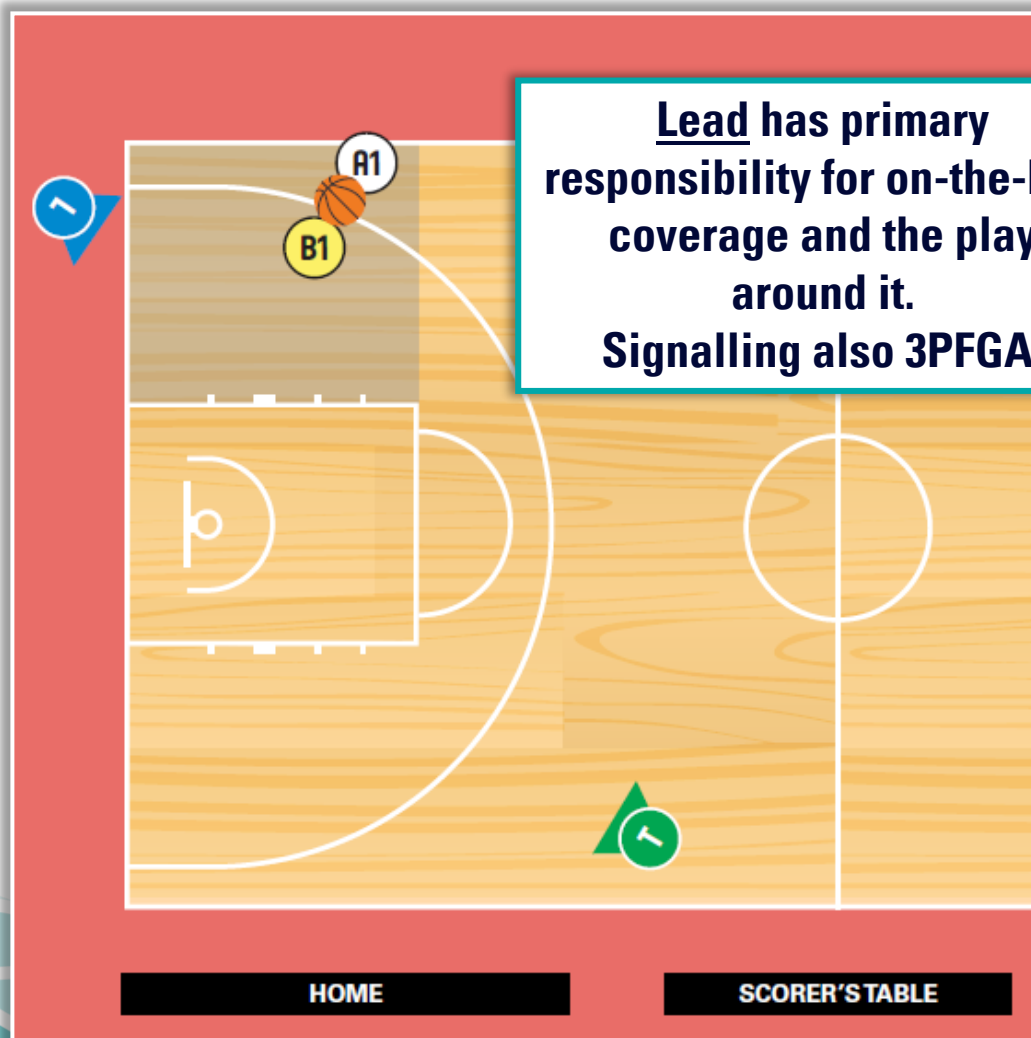
Trail has primary responsibility for on-the-ball coverage & moves more to his right.

2PO COURT COVERAGE - RECTANGLE 3

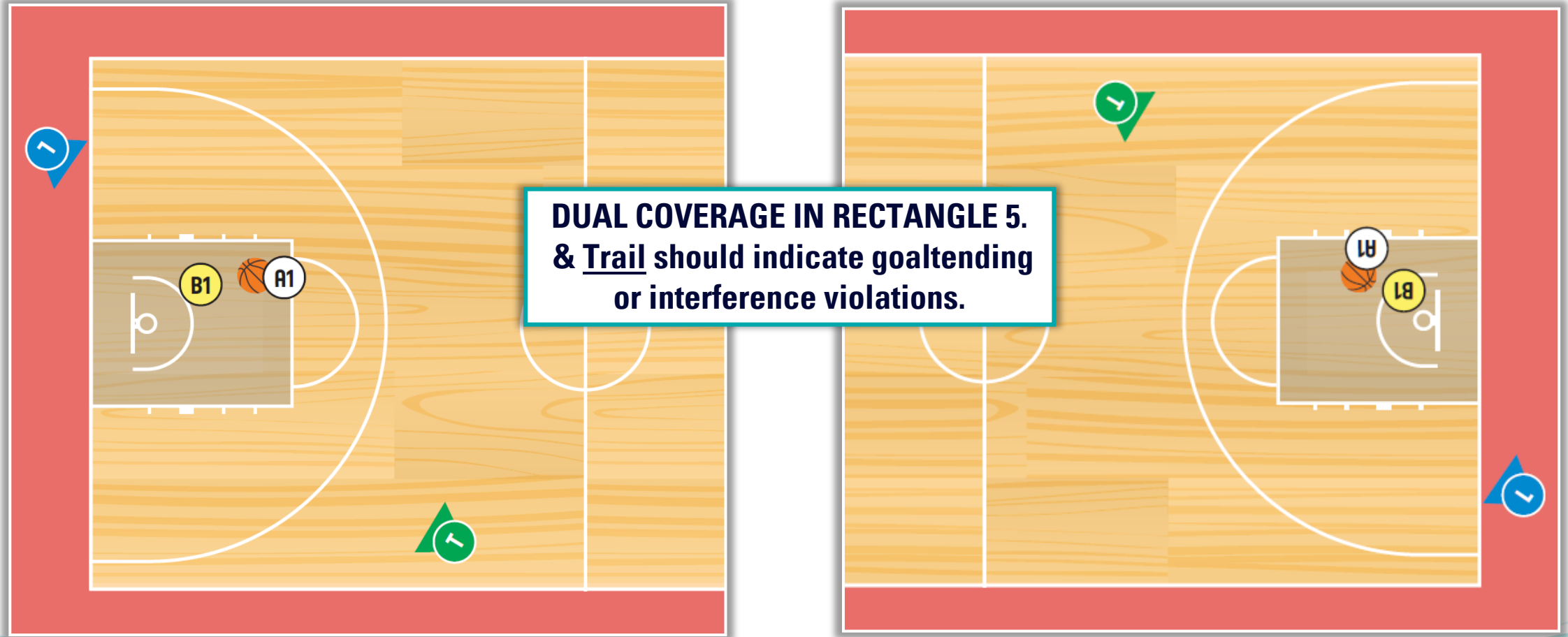


When the ball is located in low rectangle 3 referees should agree during the pre-game conference on how they can communicate to decide who takes on-ball coverage and when. When the Lead takes on-ball coverage, then the Trail should move towards his left in order to cover the play away from the ball.

2PO COURT COVERAGE - RECTANGLE 4



2PO COURT COVERAGE - RECTANGLE 5

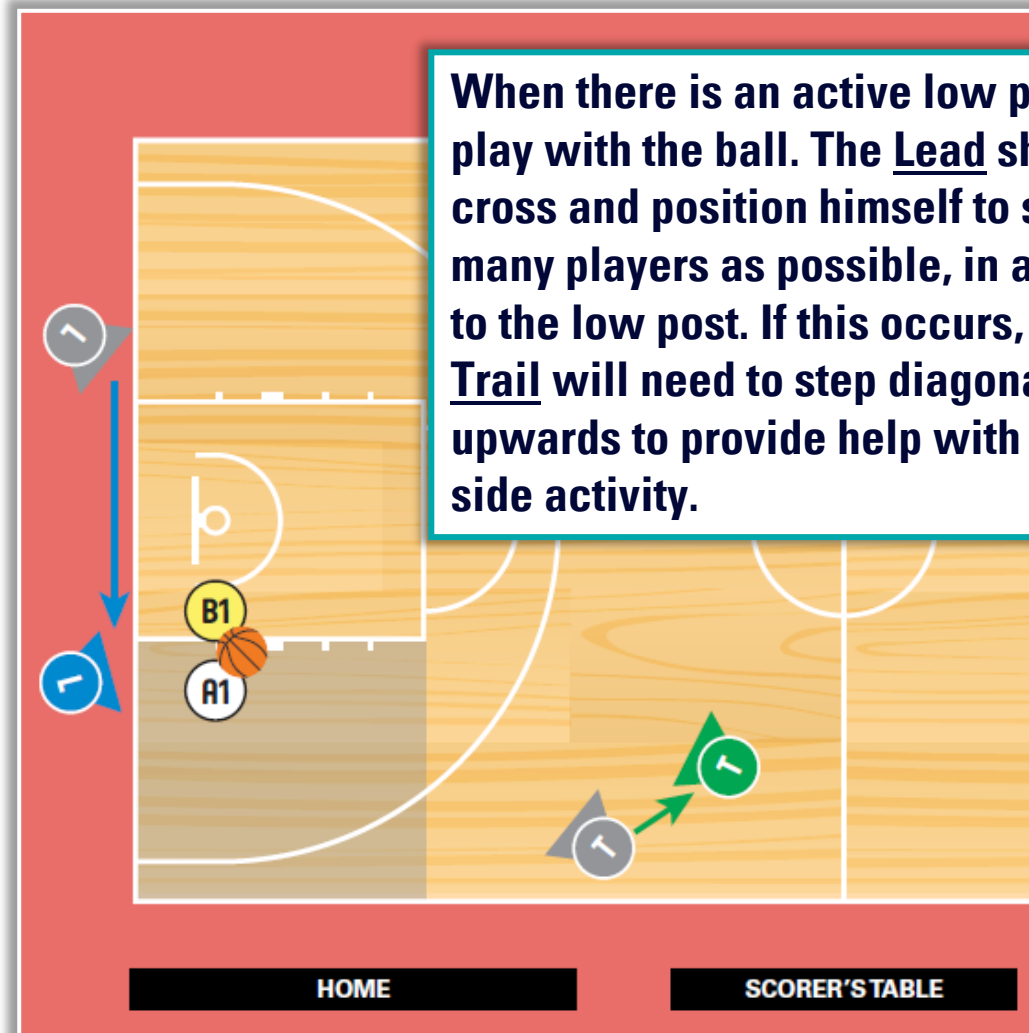
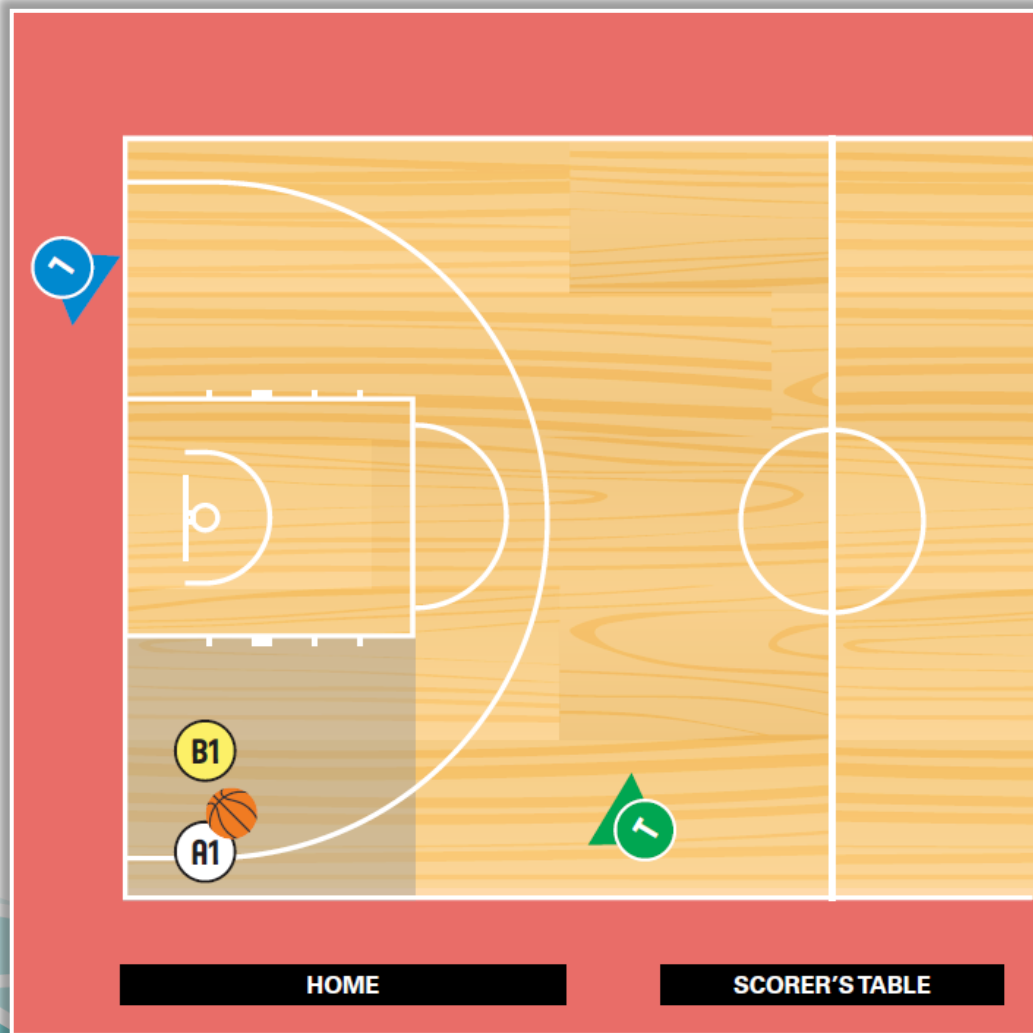


HOME

SCORER'S TABLE

VISITOR

2PO COURT COVERAGE - RECTANGLE 6

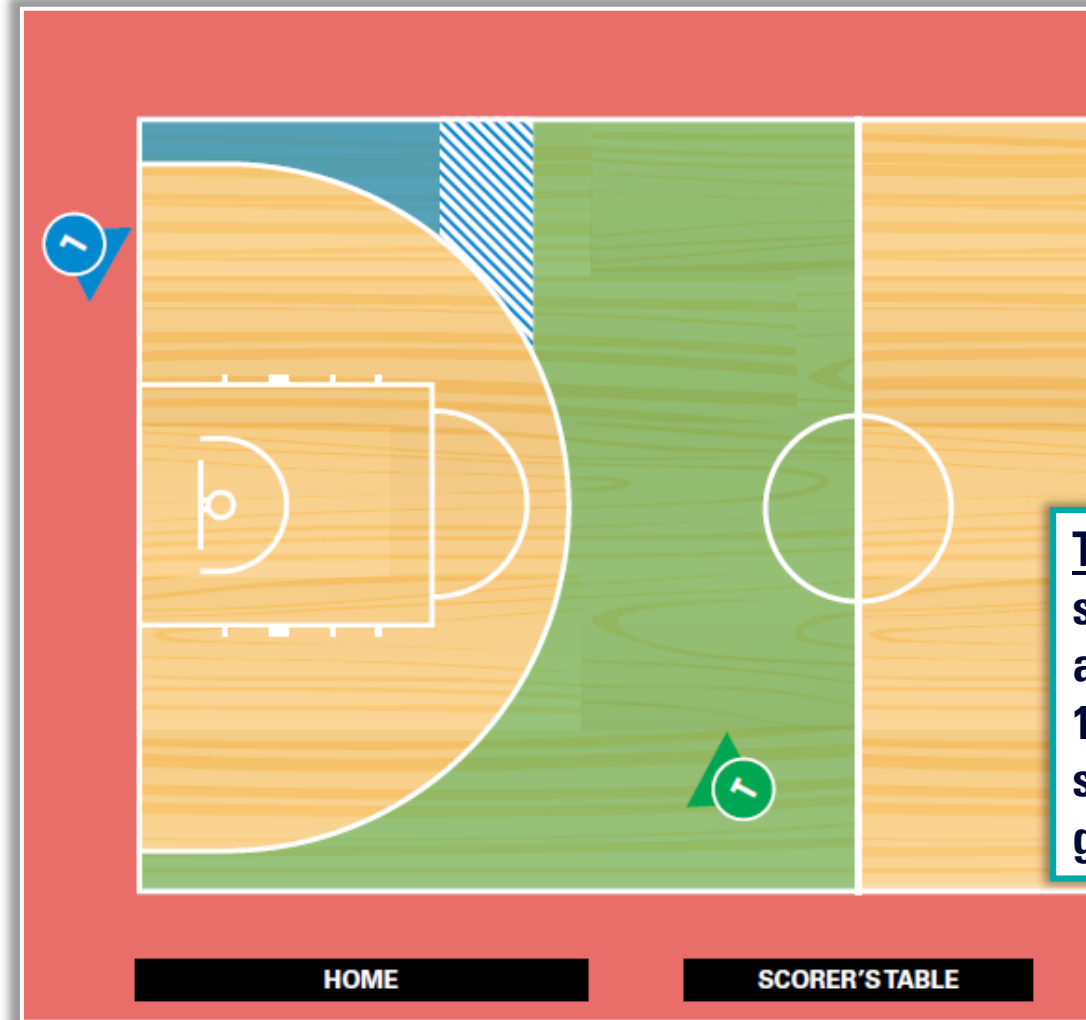


When there is an active low post play with the ball. The Lead should cross and position himself to see as many players as possible, in addition to the low post. If this occurs, the Trail will need to step diagonally upwards to provide help with weak side activity.

2PO / 3-POINT ATTEMPTS

Lead signals 3-point attempt for rectangle 4.
Lead gives help when the 3-point attempt is from low rectangle 3 (hatched area).

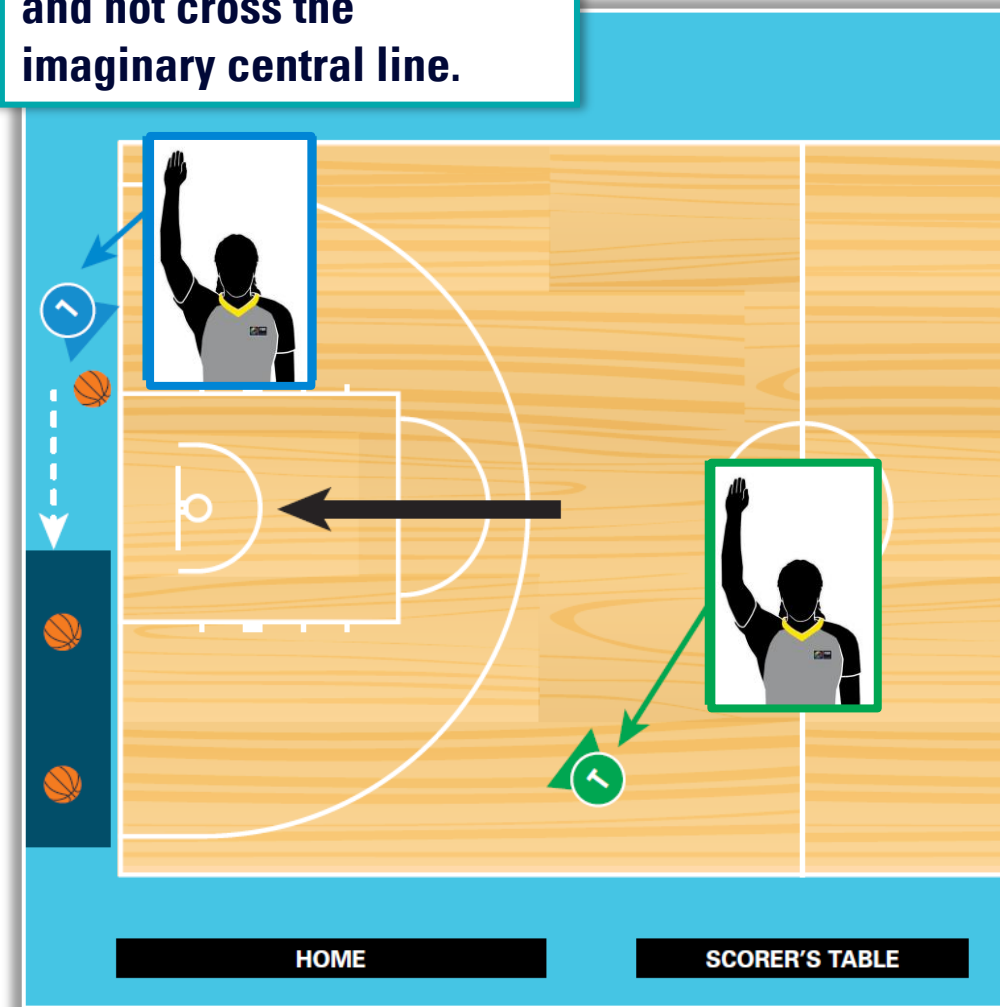
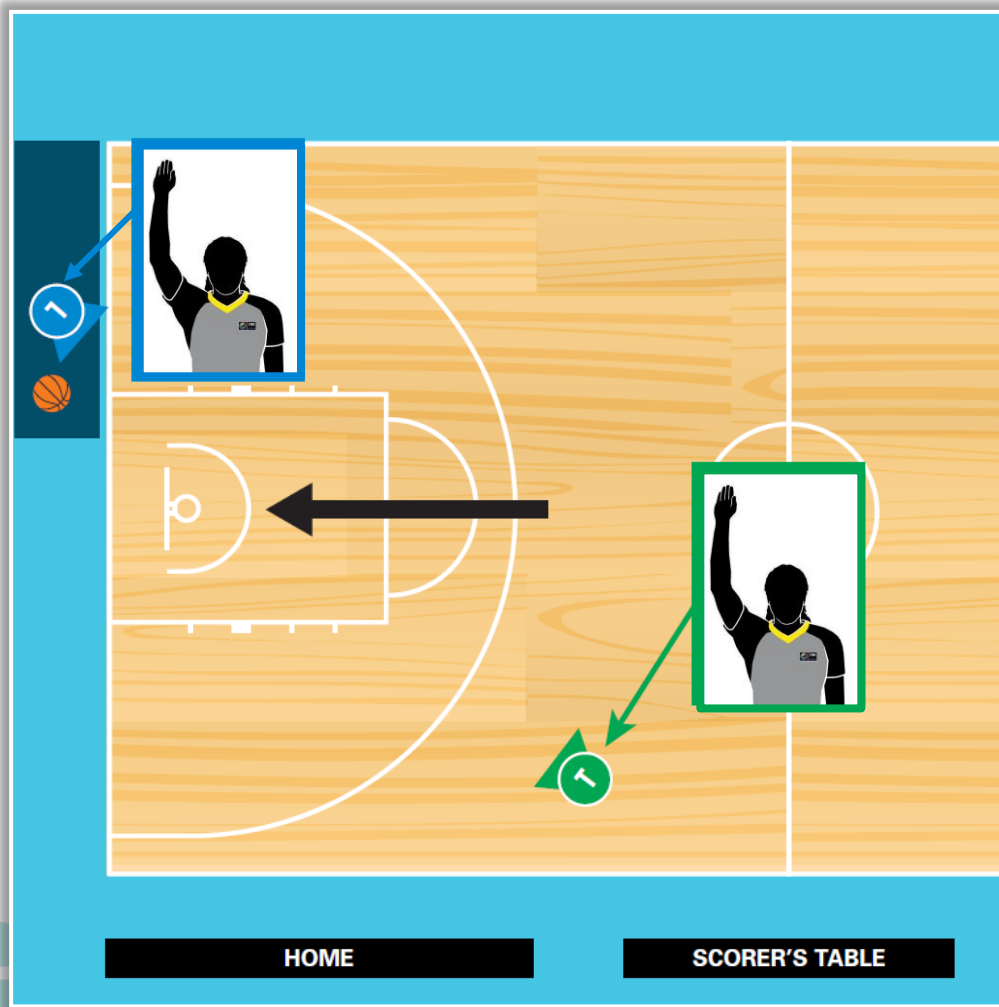
Trail mirrors the signal.



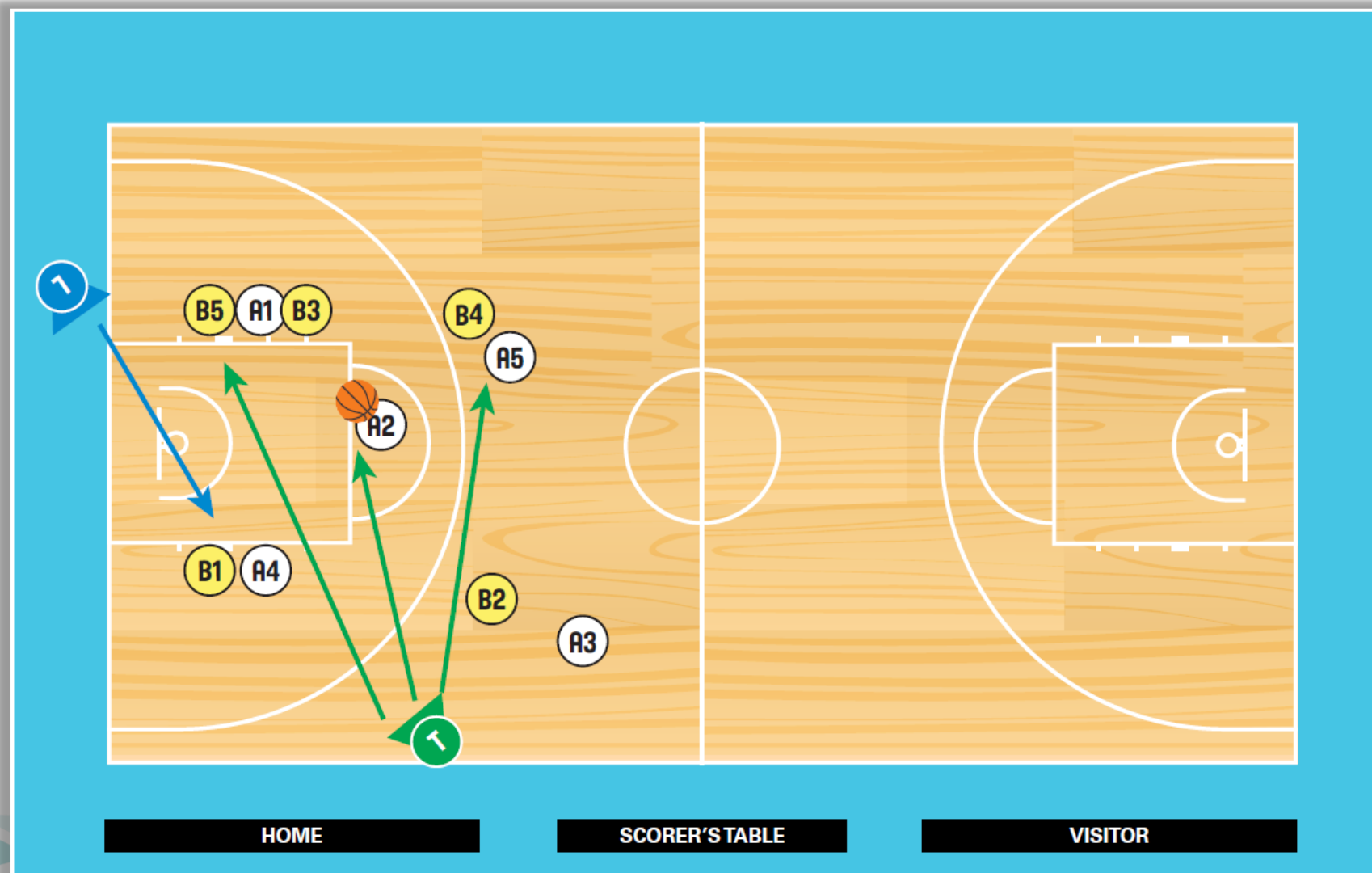
Trail is responsible for signalling all 3-point attempts from rectangle 1 – 2 – 3 – 6 and all successful 3-point field goals.

THROW-IN ADMINISTRATION

The Lead shall stay on the left-side of the thrower-in and not cross the imaginary central line.



2PO MECHANICS - FREE THROW POSITIONING





BASKETBALL CHAMPIONS LEAGUE

**Further explanation about 2 Person Officiating
can be found in the FIBA iRef app, in the
National Referee Curriculum Level 1 & 2**

CREATED BY BCL REFEREE DEPARTMENT #2021